

Express Card
48 Hour Express Ship

GRADE A



9to5
s e a t i n g

48 HOUR

Expressly for you. For those who need it 'yesterday,' our convenient EXPRESS Shipping makes our entire seating line available within 48 hours. Simply select from an array of seat controls, armrests and other offered options, in combination with any of 16 colors from our express fabric selection. It's simple, efficient, convenient and expeditious.

EXPRESS SHIP

QUALITY IS THE ISSUE

Uncompromising quality from within. Every chair, every time.

VERTICALLY INTEGRATED

Fusing manufacturing with client fulfillment

SHIP TO SUIT

As fast as 48 hours. Always Timely.

SERVICE PURE AND SIMPLE

Personalized and Responsive.

LIFETIME WARRANTY

Building quality from the ground up.

Sit in Style

Work in Comfort

Get the Value[®]

CREPE



Black 101



DARK GRAY 102

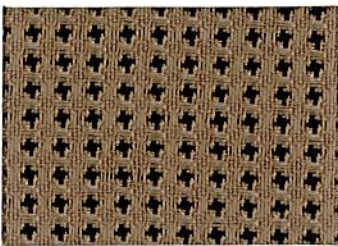


DARK BLUE 104

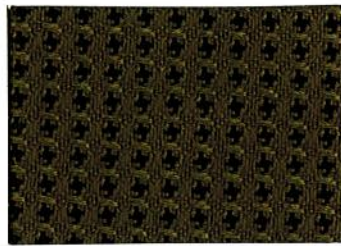


BURGUNDY 106

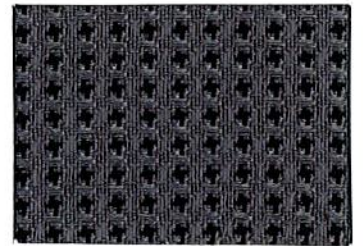
MATRIX



CHAMPAGNE 111



FERN 112



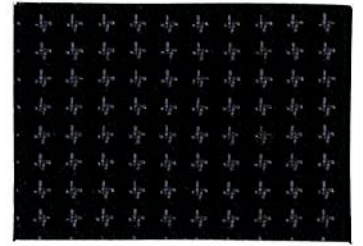
LEAD 113



PLUM 114

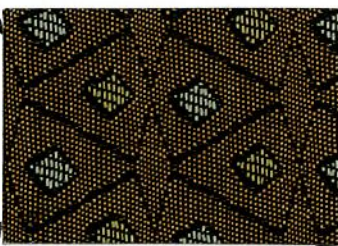


PEACOCK 115



COAL 116

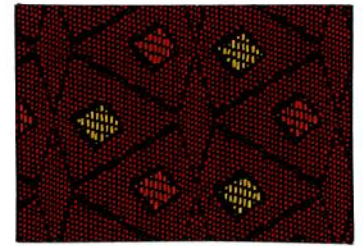
ELEMENT



~~TAUPE 121~~



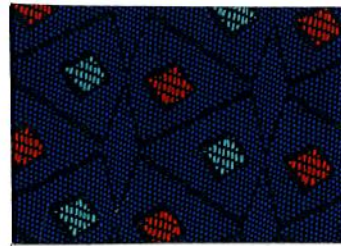
FOREST 122



MERLOT 123



GRAPE 124



INDIGO 125















~~GRATITUDE 126~~

TECHNICAL SPECIFICATIONS



2029 E. Cashdan St. - Rancho Dominguez, CA 90220
 PHONE: 800.872.9787 FAX: 866.200.0782

Grade	Pattern	Content	Abrasion	Repellency	Light-Fastness	Strength	Flamability	Cl. Code
A	CREPE    	100% Polyester	250,000	Proprietary Stain Resistance	Class 4 40 Hrs.	Warp 154 Filling 152	Cal. Tech. Bulletin 117 Sec. E (PASS)	W
A	MATRIX    	100% Polyester Acrylic Backkng	50,000	Proprietary Stain Resistance	Class 4 40 Hrs.	Warp 100 Filling 88	Cal. Tech Bulletin 117 Sec. E (PASS)	W
A	ELEMENT    	100% Polyester Acrylic Backing	50,000	Proprietary Stain Resistance	Class 4 60 Hrs.	Warp 144 Filling 375	Cal. Tech.. Bulletin 117 Sec. E (PASS)	W

Primary Application: Upholstery Seating

EXPLANATION OF ACT ICONS FOR UPHOLSTERY

FIRE RETARDANCY

Flammability testing determined as fabric's resistance to burning



COLORFASTNESS TO LIGHT

Colorfastness to light is the degree to which fabric will retain its color when exposed to light



PASSES
 AATCC 16A-1974 or AATC 16E-1976; Class 4 minimum at 40 hours
 NOTE: Class 4 minimum at 60 hours is recommended for direct sunlight exposure situations

PHYSICAL PROPERTIES

3 Physical property tests include: brush pill test to determine a fabric's pilling. Breaking/tensile strength is the ability of a fabric to withstand tension without breaking or tearing. Seam slippage is the pulling apart of fabrics at the seams



PASSES
 Brush Pill ASTM D3511, 3-4 minimum
 Breaking Strength ASTM D3597-D1682-64 (1975) 50 lbs. minimum in warp & weft
 Seam Slippage ASTM D3597-D434-75 25 lbs. minimum in warp & weft.

ABRASION

Abrasion is the ability of a fabric to withstand damage from wear and rubbing. There is a general contract specification as well as a heavy duty specification.



General Contract

PASSES

ASTM 3597 modified (#10 cotton duck);
 15,000 double rubs Wyzenbeek Method



Heavy Duty

ASTM 3597 modified (#10 cotton duck);
 30,000 double rubs Wyzenbeek Method or
 ASTM D4966 (with 21oz. weight);
 40,000 rubs Martindale Method

CLEANING CODE DEFINITIONS

S: Only pure, water-free solvents may be used.
 CAUTION: Use of water-based or detergent-based solvents may cause shrinking and/or permanent water stains.

SW: Clean with water-based cleaning agents, foam or pure water-free solvents (Energine, Carbona, Renuzit or other similar products). vacuuming or light brushing is recommended to prevent dust and soil buildup.

W: Water-based cleaning agents or foam may be used.

Fabrics dyed on different dates may have slight variations in color
 All specifications are subject to change without notice.